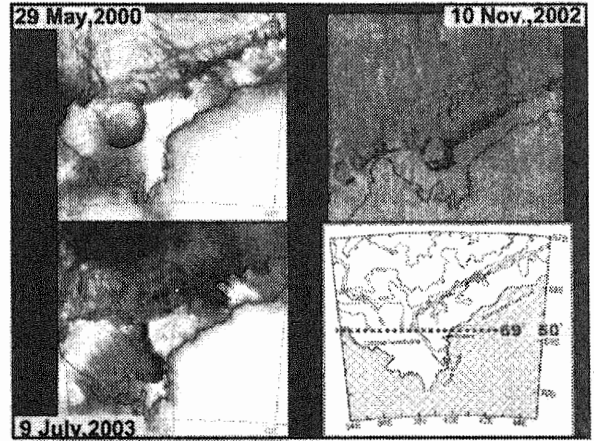
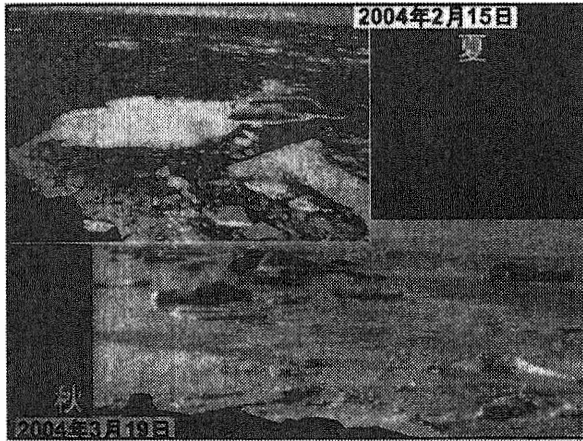


過去25年間にわたる
南極リュツォ・ホルム湾周辺の海水変動

岸尾暎輝 (総研研)・西尾文彦 (CEROS)

観測基地
衛星画像、気象データ、
砕氷航行記録
↓
・流出機構の解明
・氷上オペレーション支援

1997年7月18日 NOAA産外

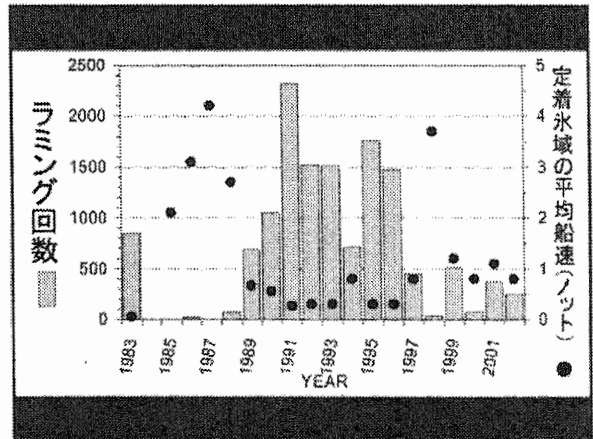


しらせ
海水観測

リュツォ・ホルム湾の海水流出歴

Year	Jan	Feb	Mar	Apr	May	Jun	Jul	Aug	Sep	Oct	Nov	Dec
1983												
1984												
1985												
1986												
1987												
1988												
1989												
1990												
1991												
1992												
1993												
1994												
1995												
1996												
1997												
1998												
1999												
2000												
2001												
2002												
2003												
2004												

※ 多量年
○ 観測期間外
● 観測期間中のみ氷出発生
○ 氷出の可能性が極めて低い
○ 氷出の可能性が極めて高い
○ 氷出の可能性が極めて低い



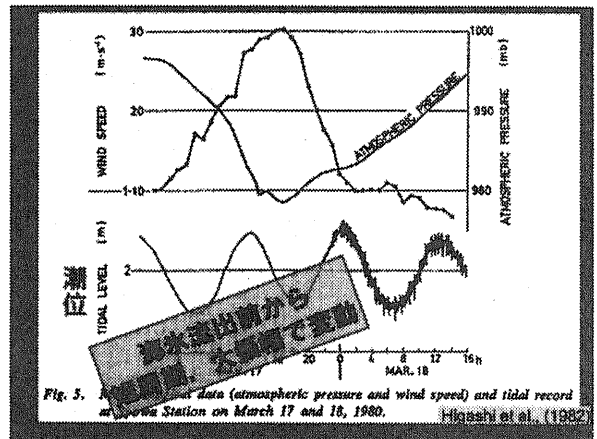
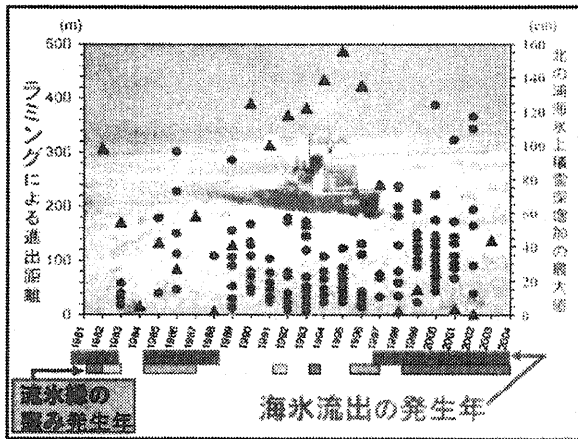
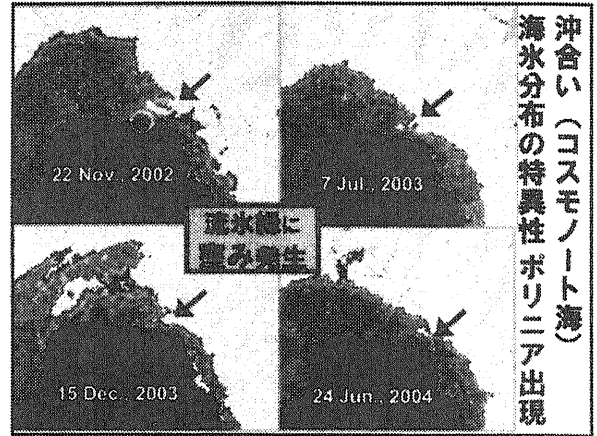
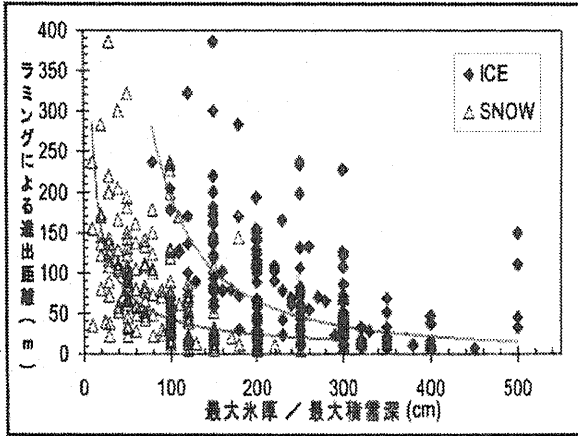
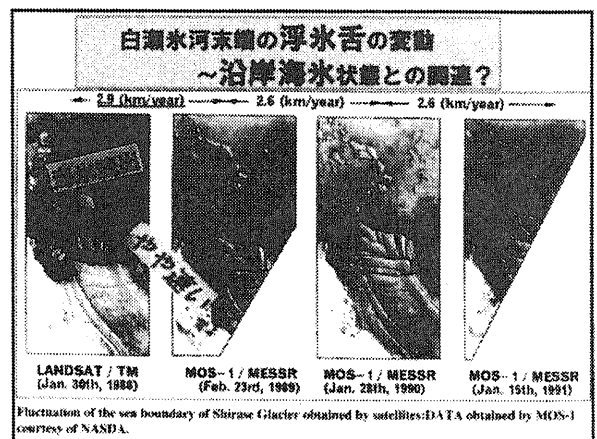
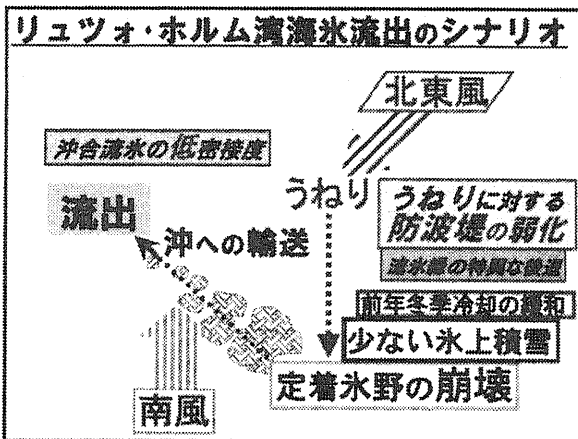


Fig. 5. Atmospheric data (atmospheric pressure and wind speed) and tidal record at Toruwa Station on March 17 and 18, 1980. Higashi et al. (1982)



Fluctuation of the sea boundary of Shirase Glacier obtained by satellites: DATA obtained by MOS-1 courtesy of NASDA.